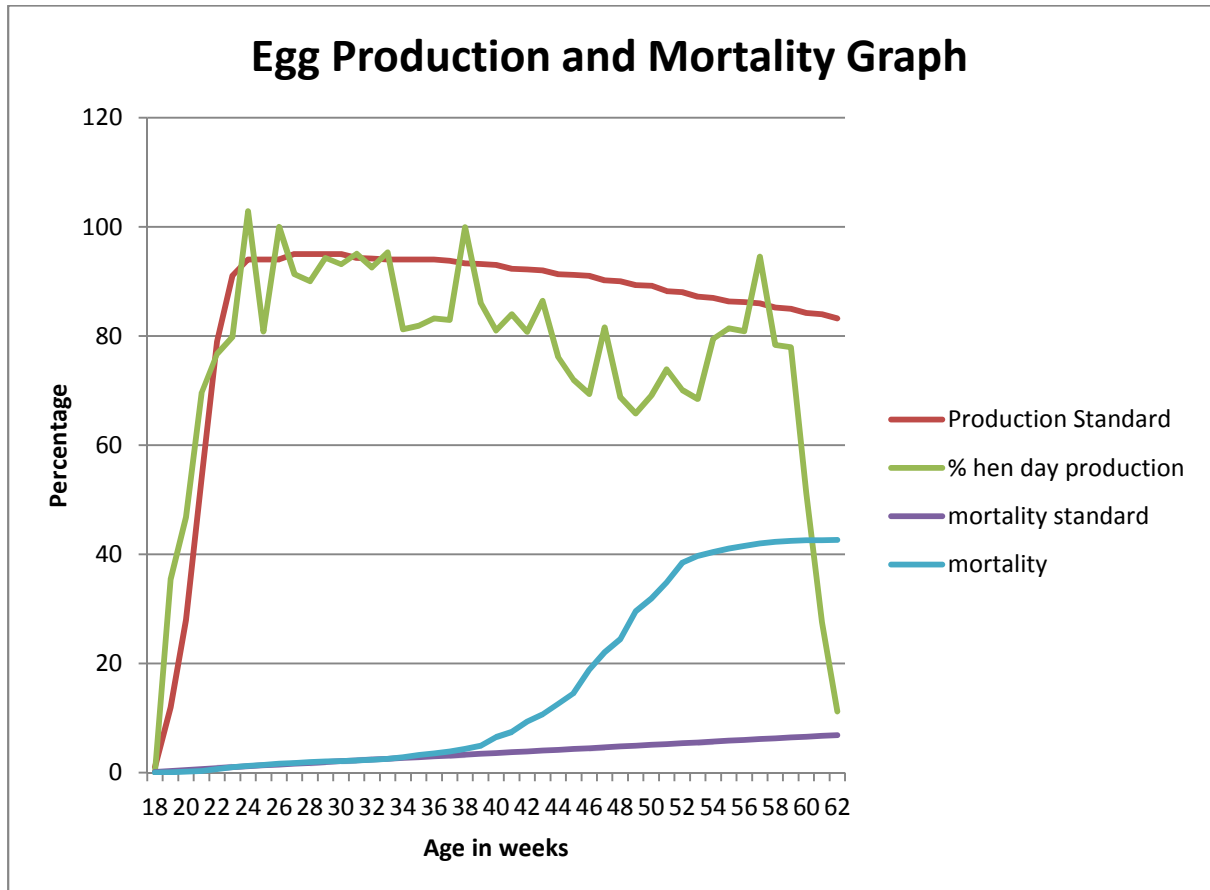


## Case – Sudden increase in mortality in Commercial Layers

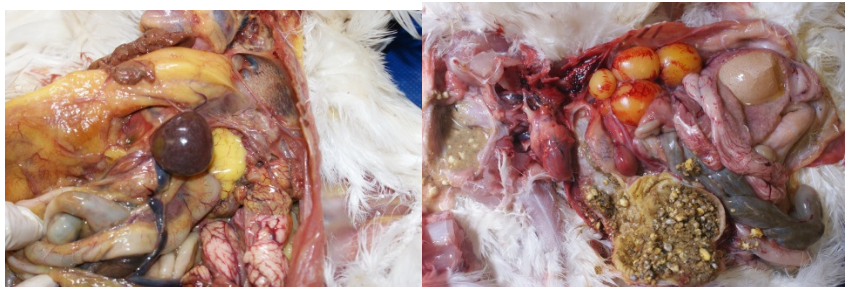
### History:

The following production records were obtained from a 22500 hen house on a commercial layer farm. The farm is situated in Gauteng. It has 31 houses, with high-rise houses and old hand operated houses. The system is multi-age. Sudden rise in mortality was seen around 37 weeks. Other neighbouring houses are also experiencing a rise in mortality at various ages on the same time.



### Clinical and Post mortem observations:

Post mortem examination yields the following:





### Laboratory findings:

Bacterial culture of liver and spleen were requested. *Salmonella* Gallinarum positive.

### Questions:

#### *Private vet questions:*

- What is your diagnosis?
- If required (depends on the diagnosis) when must this be reported to the state veterinarian?
- What measures can this farmer apply to control this disease and reduce his losses?
- How does a farmer prevent himself from obtaining this infection?

#### *State vet questions:*

- What will the quarantine for this look like?
- What kind of trace back investigations would you do?